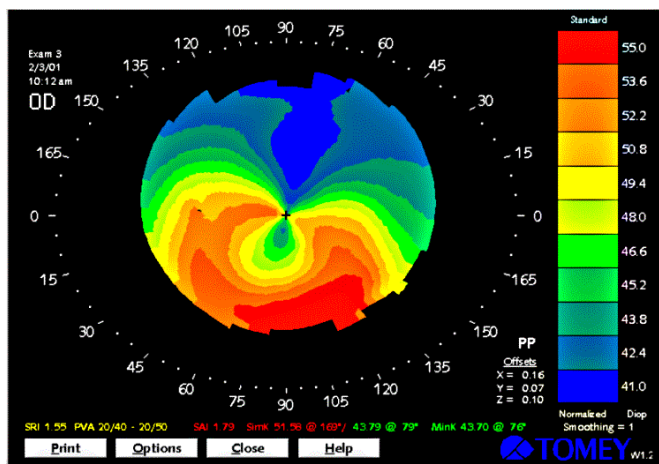


If you wear contact lenses, consider Vision Center PC your expert adviser on which lenses are right for you.

Your doctor can perform your **annual contact lens exam** at the same time as your regular routine visit. The contact lens exam is a separate entity and includes several services to ensure the long-term health of your eye. First, measurements for the correct power are taken. Then, a special microscope called a **Slit Lamp** is used to evaluate the fit of the lens on the front surface of the eye (cornea) to ensure the lens is not too tight or too loose. The lens is checked for deposits, and the cornea is checked for neovascularization; a sign that the eye is being deprived of oxygen. Finally, we use an advanced computerized **topographer** to measure the shape of the eye, to give us indications of the changes in astigmatism or to watch for progressive eye diseases that affect the cornea.



New Contact Lens Wearers

If you have never worn contact lenses before, you can try them out before ordering by scheduling a **fitting** with a Contact Lens Technician. The fitting includes free trials to start, and any replacements needed during the fitting period. It also includes time to work with the technician so they can teach you insertion and removal, and how to properly care for them. Your fitting also includes three brief visits with the optometrist over a period of a couple weeks, where the contact will be closely evaluated to make sure it floats correctly on the eye. The optometrist will view your eye with the **Slit Lamp** to ensure that the clear window into your eye (cornea) is not rejecting the contact or showing signs of oxygen deprivation. After the fitting is complete and the optometrist has determined the contacts to be safe for long-term wear, you may order a year's supply.

We have the ability to order any contact lens that is FDA approved for the United States. We have access to brands like Acuvue, Bausch and Lomb, Focus, Proclear, Synergeyes, and Cooper. Numerous semi-rigid gas permeable lenses are available and can be custom made for an exact fit for your eye. We also have a large selection of colored or tinted contacts, to change your eye color. Some contacts cost less than 60 cents a lens, and are disposed daily, giving your eye a fresh, sterile lens each morning.

If you have had trouble with dry eyes while wearing contacts, ask your optometrist if you are a candidate for punctal plugs. This modern procedure helps retain your own tears on the surface of your eye for improved comfort and longer periods of use.

Whatever lens you choose, the doctors at Vision Center PC have over eighty years of combined experience in fitting contact lenses. Always remember to wear quality polarized sunglasses over your contacts when outside.

Mark E. Mather, O.D.
Brian Davis, O.D.
Toni Eller, O.D.
Chris Scholz, O.D.

Muscatine Office: 1700 Park Avenue / P.O. Box 901 / Muscatine, Iowa 52761
563-263-2020 / 1-800-332-4393
Tipton Office: 208 W. Fifth Street / Tipton, Iowa 52772 / 563-886-2020
Wapello Office: 317 N. Second Street / Wapello, Iowa 52653 / 319-523-2020